

# Backing up and Restoring the System Database



## Edition Note

This is the second edition of *Backing up and Restoring the System Database* online book for CallXpress® version 8.10.

P/N 1081-50034-00 Rev 02 © May 2010

Produced by the AVST® Technical Communications Department

Applied Voice & Speech Technologies, Inc., reserves the right to revise this guide without notice.

## Copyright Notice

© 2010 Applied Voice & Speech Technologies, Inc. (AVST). No part of this publication may be reproduced, transmitted, transcribed, stored in a retrieval system, adapted, or translated into any language in any form by any means without the written permission of AVST. Trademarks, service marks, products names, company names or logos of AVST are protected by trademark and other laws of the United States, as well as international conventions and the laws of other countries. Other such properties that are not owned by AVST may not be used without the express permission from their owners.

## Trademarks

CallXpress, XpressCare and AVST are registered trademarks and Applied Voice & Speech Technologies, Inc., UC Connect, Desktop Call Manager, E-mail Access, NetConnect, PhoneManager, ScriptMaster, and Web PhoneManager are trademarks of Applied Voice & Speech Technologies, Inc.

Windows is a registered trademark of the Microsoft Corporation

Applied Voice & Speech Technologies, Inc.

27042 Towne Centre Drive, Suite 200

Foothill Ranch, CA 92610

(949) 699-2300

<http://www.AVST.com>

# Contents

<b>Backing up and Restoring the System Database .....</b>	<b>1</b>
<b>Preface.....</b>	<b>iv</b>
Help.....	iv
Online Books.....	iv
Document Conventions .....	v
Frequently Used Terms .....	v
<b>Overview.....</b>	<b>1</b>
<b>Backing Up the System Database.....</b>	<b>2</b>
<b>Running Daily Maintenance .....</b>	<b>4</b>
Running Daily Maintenance Manually.....	4
<b>Configuring an Online Backup Location .....</b>	<b>6</b>
<b>Configuring Services in a Multi-box Environment.....</b>	<b>8</b>
<b>Re-Initializing the System Server or Call Server Database .....</b>	<b>13</b>
<b>Recovering a Database.....</b>	<b>19</b>
<b>Re-synchronizing a Call Server.....</b>	<b>26</b>
<b>Forcing Daily Maintenance from the Command Line .....</b>	<b>28</b>

## Preface

This document is written for AVST certified CallXpress administrators who are experienced with CallXpress and are familiar with its procedures and terminology. This book assumes you are familiar with CallXpress and the Microsoft Windows® operating system.

This online book applies to CallXpress version 8.10. This book consists of the following parts:

- An introduction to the Daily Maintenance routine and its features
- Information on what is backed up during the Daily Maintenance routine
- Instructions on how to configure an Online Backup Location
- Instructions on Recovering or Re-Initializing a Database
- Instructions on Re-synchronizing a Call Server with the System Server

Use this document in conjunction with the *Installing CallXpress* and *Administering CallXpress* guides and with the CallXpress online help system.

## Help

The primary source of information about CallXpress is the online help available within any of its administrative utilities. You can consult Help by taking one of the following steps:

- Click the Help button in the dialog box or window in which you are working
- Press the F1 key at any time.

Selecting the Index and Contents tabs from the Help menu causes Help to display an index system and table of contents that cross-references all CallXpress Help files, enabling installers and system administrators to pinpoint the information they need with as little time and effort as possible.

## Online Books

Included on the CallXpress DVD is catalog of technical documentation pertinent to the current software version. If you are installing any advanced applications, such as Networking and Fax Server applications, you should refer to the appropriate online books for application and installation information.

AVST technical documentation is provided in Adobe Acrobat PDF format and must be read using the Adobe Acrobat Reader program. For your convenience, we have placed a copy of the Adobe Acrobat Reader program on the CallXpress DVD. You can also download the program from <http://www.adobe.com>.


## Document Conventions

The following conventions apply to information in this guide:

**Bold font** Indicates text you type; enter the information exactly as shown. It also indicates buttons and commands that you click or select from menus.


*Italics* Introduce or emphasize a term; can also signify a CallXpress voice prompt or announcement. Titles of other documents are shown in italics as well.

---

 **WARNING** A warning paragraph advises you of circumstances that can result in the loss of data, harm to the Telephony Server platform, or personal harm.

---

---

 **IMPORTANT** An important paragraph gives decision-making information or informs you of the order in which tasks need to be completed.

---

---

**NOTE** A note gives additional information, provides an explanation, or indicates an exception to the information in the preceding text.

---

## Frequently Used Terms

The terms System Server and Call Server refer to an organization's computer platforms that have CallXpress software installed and are dedicated for use as the organization's unified messaging servers. The term Call Server throughout this document also refers to the System Server with Call Services enabled.

The term Telephony Server refers generically to the System Server platform, the Call Server platform, or both. The term is most often used to describe a software or hardware installation or configuration practice where the role of the server platform is not specifically expressed.



## Overview

CallXpress makes a complete system backup of the System Server and each Call Server to the online backup location every day during the Daily Maintenance routine. A complete online backup of CallXpress is comprised of the following pieces:

- Daily Maintenance backup of the System Server
- Daily Maintenance backup of each Call Server

Backing up CallXpress consists of the following activities:

- Configuring the CallXpress File Manager service on the System Server and the Call Servers with administrator-level logon rights.
- Configuring an Online Backup Location
- Running a scheduled or a complete Daily Maintenance on the System Server and the Call Servers to create an online backup of the system database. The scheduled Daily Maintenance routine automatically backs up the following every time it runs:
  - System Data
  - Mailbox configuration data
  - Name recordings, greetings, announcements
  - Local store messages
  - Message tracking data
  - Registry data
  - Report data
- Maintaining a current and complete System Backup at the online backup location to support a high rate of survivability and availability

---

**NOTE** The backup and restore process does not require a mailbox archive in CallXpress version 8.0 or later. The Online Backup has replaced this previous requirement.

---

## Backing Up the System Database

A complete system backup of the System Server and Call Servers is created automatically every day following the scheduled Daily Maintenance routine. The backup is automatically copied to the online backup location. The online backup location is configured from the Daily Maintenance dialog box of the Main tab in the System Configuration utility.

You can configure each server in the system to copy the backup files to the online backup location after the Daily Maintenance routine completes. The location can be a local drive, a network drive, or a USB device.

Daily Maintenance completely backs up the database including, but not limited to, the information shown in the following table.

<b>Information</b>	<b>Source Directory for Backups</b>
System configuration data	D:\CX\Backup\ <file&gt;.zip<sup>1</file&gt;.zip<sup>
Local store voice and fax message tracking data	D:\CX\Backup\ <file&gt;.zip<sup>1</file&gt;.zip<sup>
CallXpress related registry entries	D:\CX\Backup\ <file&gt;.zip<sup>1</file&gt;.zip<sup>
Mailbox configuration data	D:\CX\Backup\ <file&gt;.zip<sup>1</file&gt;.zip<sup>
Recorded announcements	D:\CX\Speech\Annc
Recorded names	D:\CX\Speech\Names
Recorded personal greetings	D:\CX\Speech\Greet
Local store voice and fax messages	D:\CX\Speech\Msgs
Reports	D:\CX\Reports

Note 1. The following are examples of <file>.zip. for the System Server and each Call Server:

A System Server Backup Zip file on 3/22/2010 at 02:00:02 has a filename of:


S\_[machine name]\_20100322\_020002.ZIP

A Call Server Backup Zip file on 3/22/2010 at 02:00:02 has a filename of:

C\_[machine name]\_20100322\_020002.ZIP

Use the Online Backup feature of the System Server and all of the Call Servers to store backups in a location outside the CallXpress system. Then, if a problem arises such as a computer failure or human error, you can restore your system using the most recent backup. Otherwise, you would have to reconstruct the parameters of your system from memory or printouts.

---

 **IMPORTANT** Depending on the setup of the system you are administering, some of these data types may not be available for backup. For example, because the e-mail server retains voice and fax messages for subscribers whose Message Retrieval Mode is set to External, those messages are not available to any System Server backup procedure. Likewise, some Subscriber mailboxes may not be available for backup from the System Server if the Directory Agent for Microsoft Exchange is in use. In such a system, be sure to perform regular, coordinated backups of the CallXpress System and the e-mail servers.

---

## Running Daily Maintenance

The scheduled Daily Maintenance routine runs automatically every day. The scheduled time to run Daily Maintenance for each server in the system is configured on the Environment tab of the Administration utility on the System Server. The default time Daily Maintenance runs on each server is 2:00 AM.

You can adjust the scheduled time of Daily Maintenance on the local server using the Schedule: Time of Day setting on the Daily Maintenance dialog box of the Main tab in the System Configuration utility. This setting is the same setting found on the Environment tab, but for the local server only.

The Daily Maintenance routine performs the following major tasks:

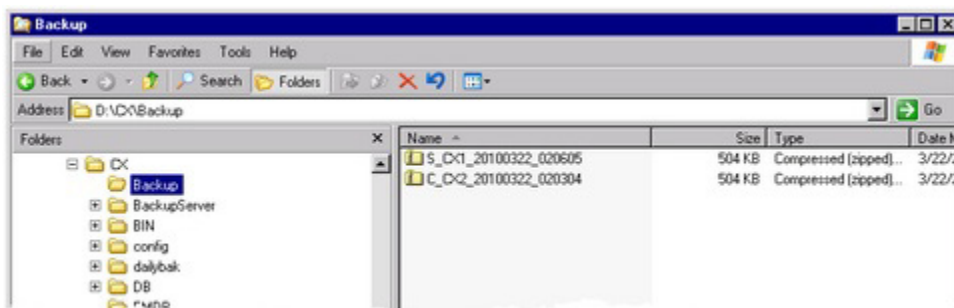
- Purges message, recording, and grammar files that are no longer referenced by the system
- Purges log files and reports data considered out of date
- Manages the online storage of the recovery data including Daily Maintenance zip files (see below), messages, recordings, and report data
- Runs the DailyMaintUser.bat file

Daily Maintenance backs up the system data, mailbox configuration data, registry data, message tracking data, and report data every time it runs. It creates a .zip file in the CX\Backup directory of the server on which it runs.

For example, a System Server Backup Zip file on 3/22/2010 at 02:06:05 has a filename of: S\_[machine name]\_20100322\_020605.ZIP

A Call Server Backup Zip file on 3/22/2010 at 02:03:04 has a filename of: C\_[machine name]\_20100322\_020304.ZIP

(where *machine name* is the name of the server).

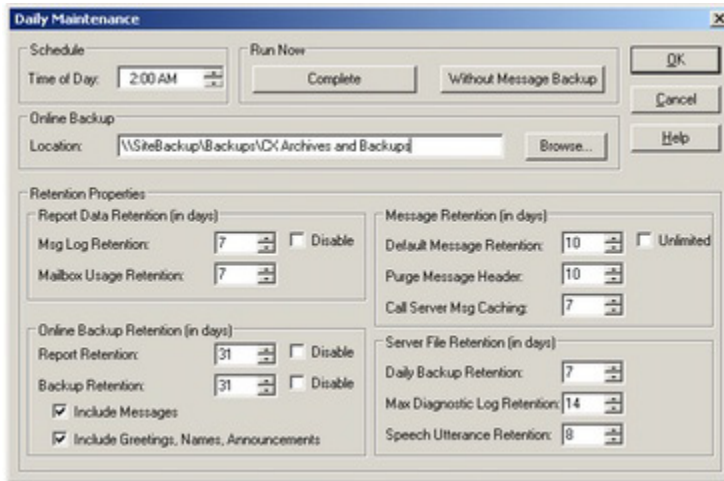


## Running Daily Maintenance Manually

Daily Maintenance can be run anytime from the Daily Maintenance dialog box of the Main tab in the System Configuration utility.

## To manually run Daily Maintenance...

1. On the Main tab click **Daily Maintenance**. The Daily Maintenance dialog box displays.



2. From the Run Now area of the Daily Maintenance area do one of the following:

### ***If you want...***

### ***Then...***

Complete backup

Click **Complete** to manually run the daily maintenance routine before the scheduled time. This selection performs the identical actions of a scheduled daily maintenance including message cleanup and backup. This selection is highly recommended before any system hardware enhancements, system upgrades, or platform replacements since a complete data snapshot is created locally and is copied to the Online Backup Location.

Backup Without Message Backup

Click **Without Message Backup** to manually run an abbreviated daily maintenance routine before the scheduled time. This selection performs fewer actions than the scheduled daily maintenance or the Complete daily maintenance selection by excluding message cleanup and backup. This selection is recommended before a software update since it creates a comprehensive data snapshot locally and is copied to the Online Backup Location. It may require much less time than the Complete selection, particularly on a CallXpress using extensive local message storage.

---

**NOTE** Daily Maintenance can be also run from the command line in the \CX\BIN directory although this is rarely needed and is not recommended. See the section, "Forcing Daily Maintenance from the Command Line," for instructions on how to run Daily Maintenance from the command line.

---

## Configuring an Online Backup Location

CallXpress automatically copies the system backup file it created during the Daily Maintenance routine to an online location, as well as local store messages, name recordings, greeting recordings, announcements, and report data. You can configure CallXpress to copy the daily backup files to a local drive, a network location or an external USB drive. CallXpress manages the retention time of the Online Backup Location files based on its server time.

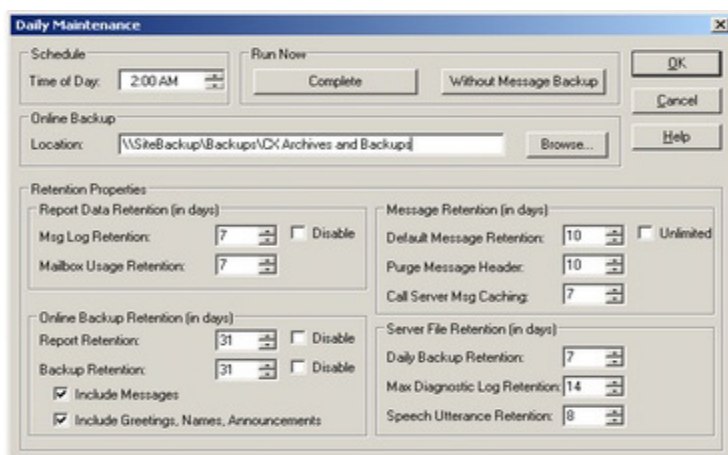
**IMPORTANT** You must configure the CallXpress File Manager service with an administrator-level log on and password to allow CallXpress the right to copy the backup to the Online Backup Location. See the section, "Configuring Services in a Multi-box Environment" for more information on how to configure the required services.

### To configure an Online Backup Location for backup storage...

1. Start the System Configuration utility.
2. On the Main tab click **Daily Maintenance**. The Daily Maintenance dialog box displays.
3. In the Online Backup Location field type a drive letter and path name, a UNC path name, or click **Browse** to select a location from the list.

**NOTE** Drive letters are valid for local drives only. The CallXpress online backup does not support mapped network drives.

**IMPORTANT** To maximize recovery options in the event of a system failure, AVST recommends selecting a different server on the network as the online backup location.



4. Click **OK**. Three directories are created in the Online Backup Location directory. In addition, subdirectories are created within these directories. Each subdirectory is used to store a particular backup set of files. They are:
  - <online\_location>\**Backup**
  - <online\_location>\**Reports**
  - <online\_location>\**Speech**

## Configuring Services in a Multi-box Environment

You must configure the CallXpress File Manager service of the System Server and all of the Call Servers with administrator-level logon rights to allow CallXpress to copy the backup files to the Online Backup Location.

In addition, Call Servers must access the System Server in order to share files. To do so, the CallXpress File Manager service on the Call Servers and the System Server must have the same administrator-level logon rights.

If you intend to use a unified messaging feature you must also configure the CallXpress service with a administrators log on and password.

You can access the Windows<sup>®</sup> Services Manager from the from the CallXpress Database Initialization Service Configuration dialog box by clicking **Launch Windows Services Manager** or by navigating to Services from Windows Computer Management. The following procedures and examples assume you are accessing Services from the CallXpress Database Initialization Service Configuration dialog box. You must configure the following services:

- The CallXpress File Manager service on the System Server and each Call Server to use the online backup feature to a network location
- The CallXpress File Manager service on the System Server and each Call Server to allow each server to communicate and share files with each other.
- The CallXpress service on the System Server and each Call Server if you are going to use the unified messaging feature

---

**NOTE** If you have not already created the same administrator-level user on both the System Server and all of the Call Servers you must do so before continuing with the installation.

---

---

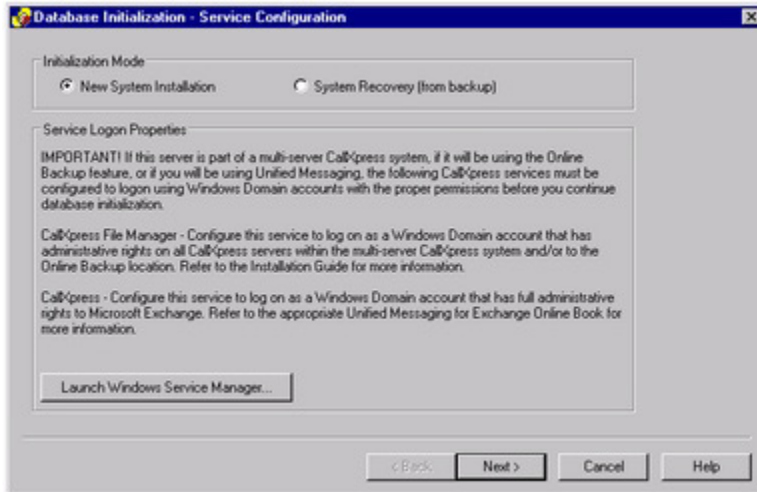
**NOTE** If you have already installed software and are configuring services later for a multi-box environment, you can access the Windows Services Manager from Windows Computer Management.

---

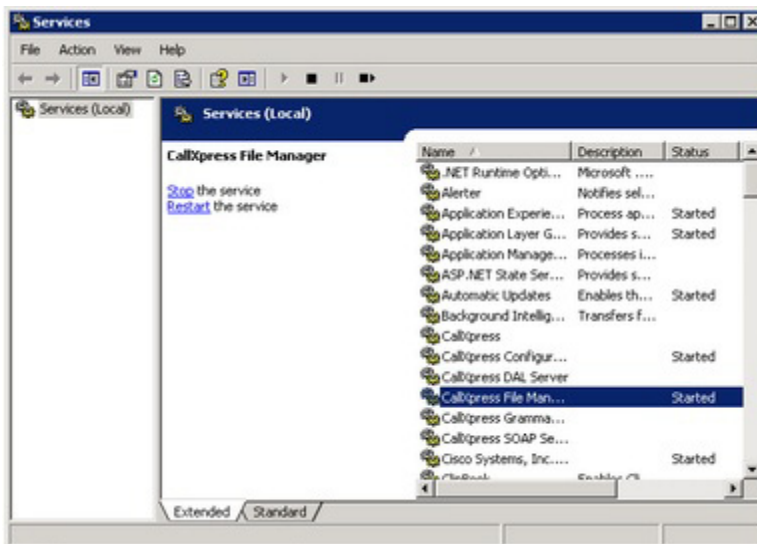
The Database Initialization - Service Configuration dialog box enables you to configure your CallXpress File Manager and CallXpress services for Unified Messaging.

## To set the logon account for the services...

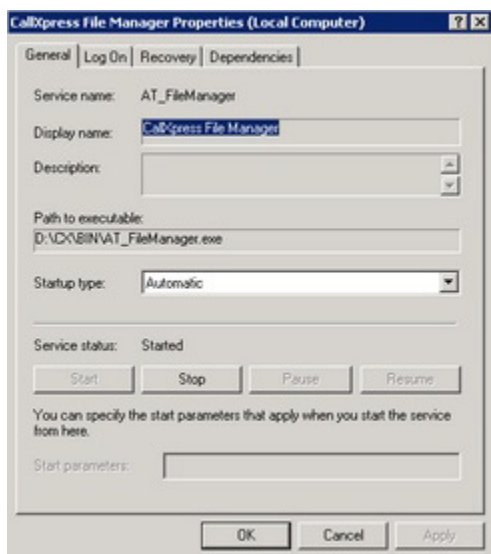
1. From the Database Initialization - Service Configuration dialog box, click **Launch Windows Service Manager**.



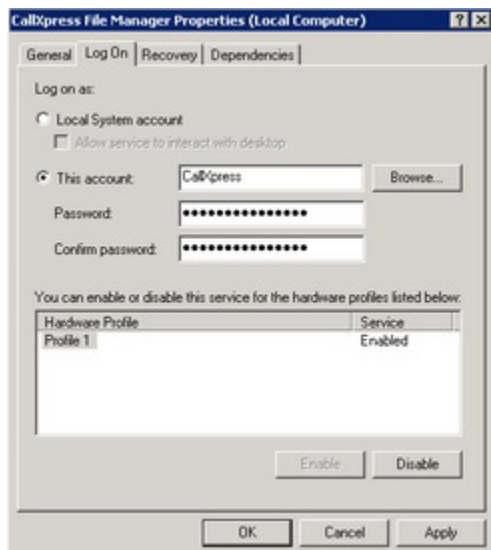
2. The Windows Services Manager window displays. Double-click the CallXpress **File Manager Service**.



3. The CallXpress File Manager Properties dialog box displays. Click the **Log On** tab.



4. The Log on tab displays. Click the **This account** radio button.



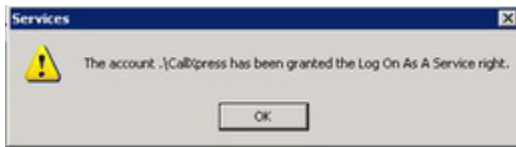
5. Type the administrator's account name or click **Browse** to search for the administrator's account name.
6. Enter the correct password in the **Password** and the **Confirm Password** fields, and then click **OK**.

---

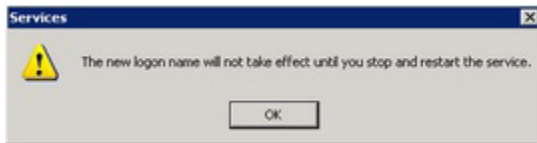
**IMPORTANT** You must delete the dots that are shown in the Password and Confirm Password fields and enter the correct password in these fields before you click OK.

---

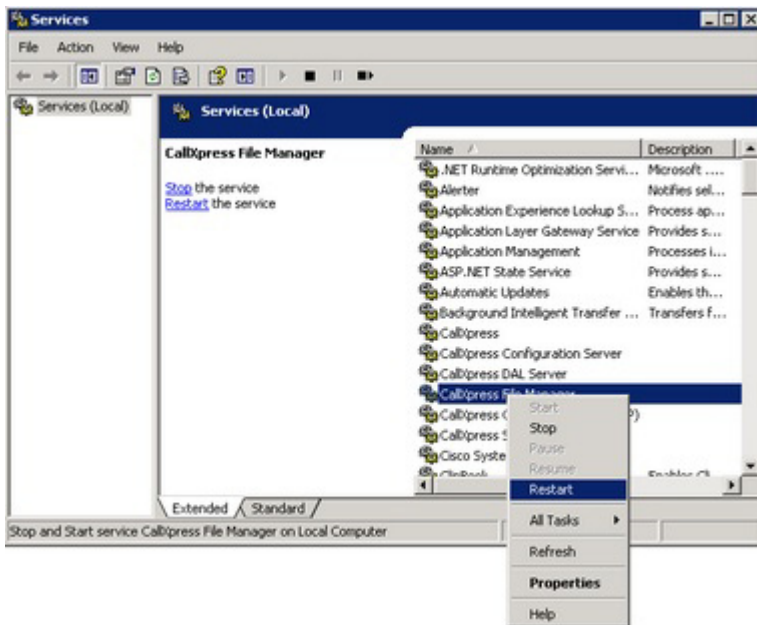
7. A dialog box displays to tell you that the account you selected has been granted the Log On service right. Click **OK**.



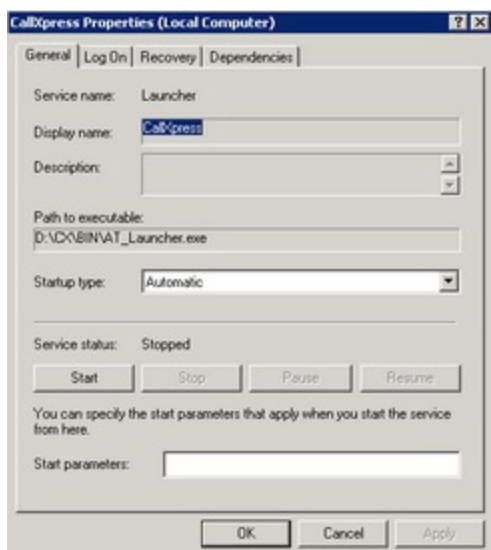
8. Another dialog box displays telling you that you must stop and restart the services in order for your changes to take effect. Click **OK** to continue.



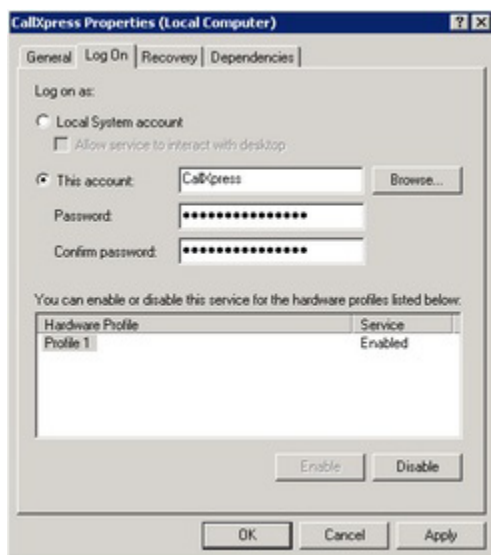
9. From the Windows Services Manager window right-click the **CallXpress File Manager** service, and then click **Restart**. The service is stopped, and then restarted.



- If you are using the Unified Messaging feature, double-click the **CallXpress** Service. The CallXpress service Properties window displays.



- Click the **Log On** tab. The Log On tab displays.



- Click the **This account** radio button.
- Type the administrator's account name or click **Browse** to search for the administrator's account name. .
- Enter the correct password in the **Password** and the **Confirm Password** fields, and then click **OK**.

---

**IMPORTANT** You must delete the dots that are shown in the Password and Confirm Password fields and enter the correct password in these fields before you click **OK**.

---

- Close the **Services** window.

## Re-Initializing the System Server or Call Server Database

The database is re-initialized from the Database dialog box of the Main tab in the System Configuration utility. The System Server must be shutdown to re-initialize the database. You can re-initialize the database to a default state or use a backup <file>.zip to restore the system database using the Recovery process.

---

**NOTE** Unless otherwise stated, the images and steps below are for a System Server but in most cases apply to both the System Server and the Call Server. When the differences are important, additional images and steps specific to a Call Server are also shown.

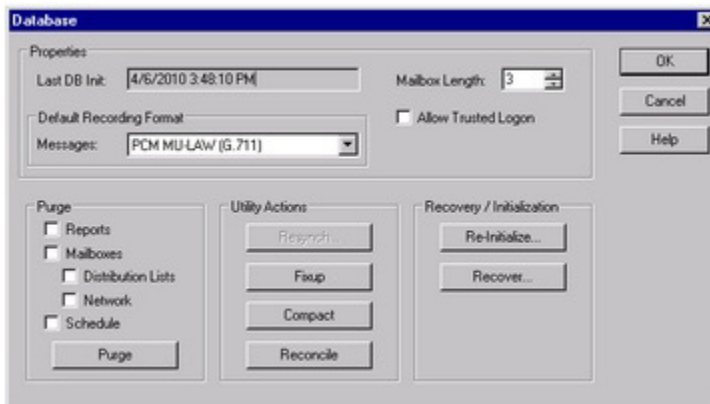
---

**WARNING** The following procedure deletes the entire application and restores the System Server in a like-new condition with no database. All settings in the System Server dialog boxes and tabs are deleted and are unrecoverable. Further, all names, greetings, announcements, and locally stored messages are deleted and are unrecoverable.

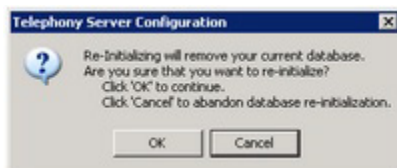
---

### To reinitialize the database...

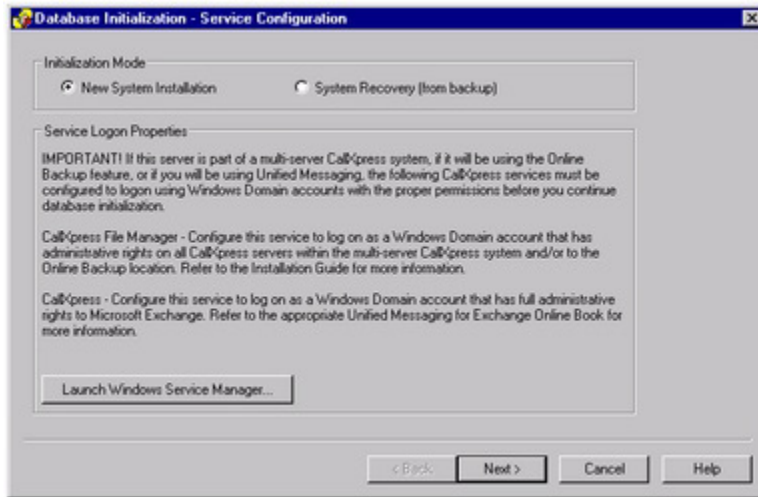
1. **Shut down** the System Server, and then on the Main tab, click **Database**. The Database dialog box displays.



2. Click **Re-Initialize**. The Telephony Server Configuration text box displays.



- Click **OK**. To confirm the re-initialization process, click **OK**. The Database Initialization-Service Configuration dialog box displays.



- Click **Launch Windows Service Manager** to open the Windows Service Manager.

***If you are...******Then...***

Configuring a Multi-box installation

Configure the CallXpress File Manager service with a domain administrative-level log on and password. The System Server and the Call Servers must use the same administrator-level log on and password on both services.

Configuring a System Server w/ Call Services only

Configure the CallXpress File Manager service with a domain administrative-level log on and password.

Additionally configuring CallXpress to use the Unified Messaging feature

Configure the CallXpress service with a domain administrative-level log on and password. The System Server and the Call Servers must use the same administrator-level log on and password on both services.

Close the Windows Service Manager when you have finished configuring the services.

**!** **IMPORTANT** You must configure the CallXpress File Manager service with a administrator-level log on and password to allow CallXpress to copy the backup to the Online Backup Location. Refer back to the section, "Configuring Services in a Multi-box Environment" for more information on how to configure the required services.

You must configure the CallXpress File Manager services with the same administrator-level log on and password on the System Server and the Call Servers if you are configuring CallXpress in a multi-server environment.

- Determine how the database is initialized.

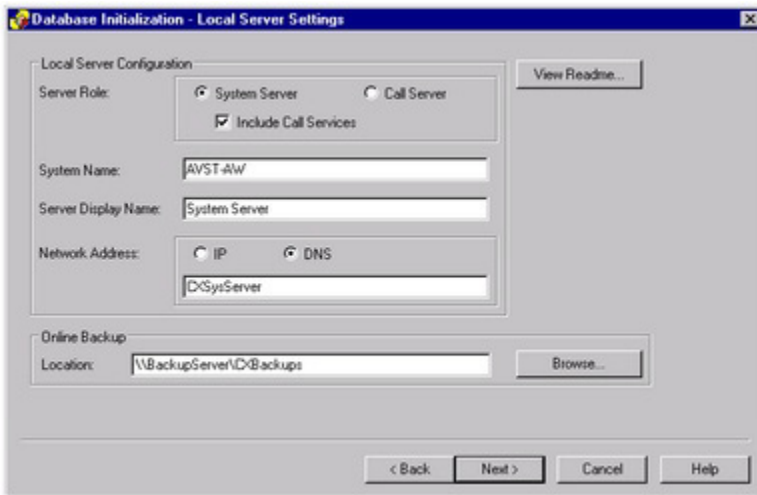
***If you are...***

***Then...***

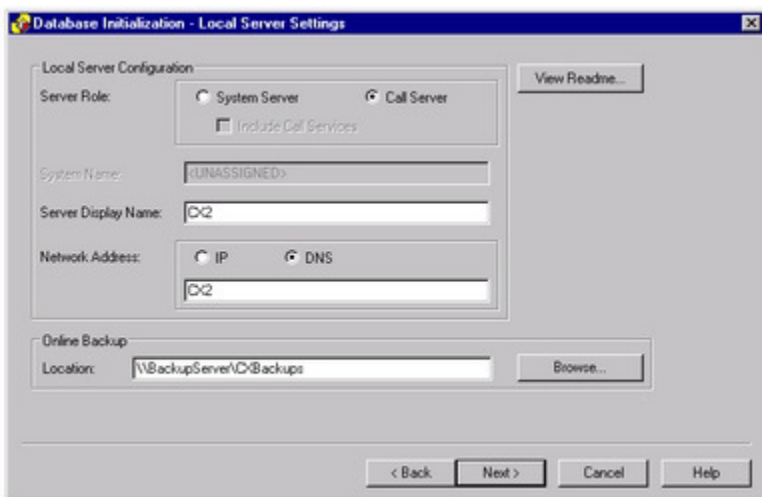
Initializing a new database Click **New System Initialization**, and then click **Next** to continue through the database initialization. The Database Initialization–Local Server Settings dialog box of the System Server or the Call Server displays.

Recovering the system with a backup Click **System Recovery (from backup)**. The Database Recovery dialog box displays. Continue with the database recovery process. Skip to the section, "Recovering a Database" for more information.

System Server Database Initialization–Local Server Settings dialog box

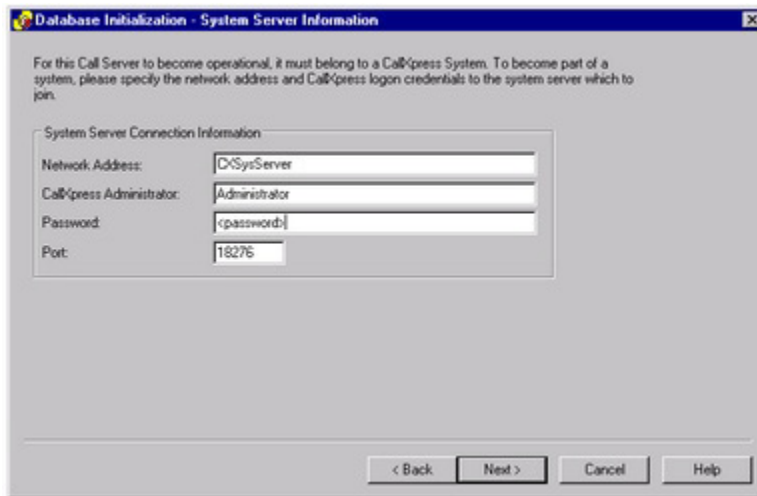


## Call Server Database Initialization–Local Server Settings dialog box

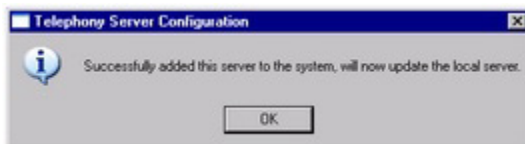


6. Configure the Local Server Configuration for the type of server, the system name, the server display name, the network address, and the online backup location.
  - Select the Server Role for the server. If it is the System Server and Call Services are also required, select **Include Call Services** too.
  - Enter the System Name
  - Enter the Server Display Name
  - Enter the Network Address. If you select IP, enter a TCP/IP address. If you select DNS, enter a DNS name.
  - Enter the online backup location, or click **Browse** to search from the list.

7. If you are initializing a Call Server, the Database Initialization Wizard displays. Otherwise, skip to step 9. Click **Next** when you have entered all of the information in this dialog box.
  - Enter the network address in the Network Address field
  - Enter the administrator's name in the CallXpress Administrator field
  - Enter the administrator's password in the Password field
  - Enter the TCP port number in the Port field. (The default port number is 18276.)

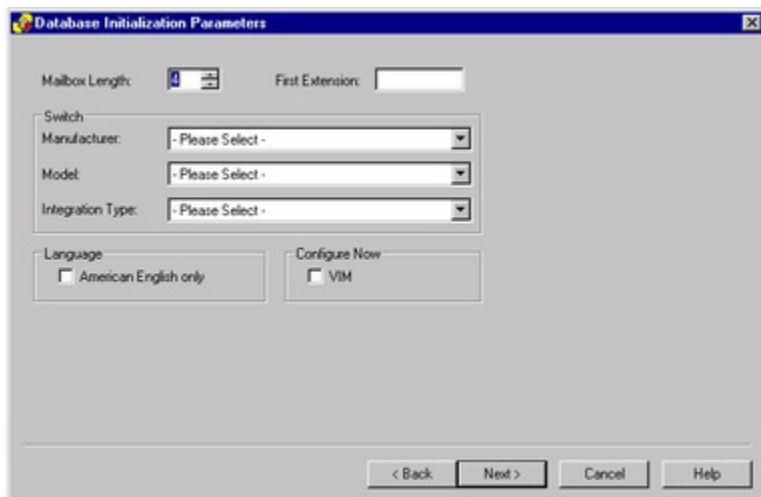


8. Once the Call Server has been successfully added to the System Server, a confirmation message displays. Click **OK**, and then continue to step 9.



9. Wait for the system to initialize its database. Depending on the size of the database, this process may take several minutes. When the process is complete, the Database Initialization Parameters Wizard dialog box displays. Enter the mailbox length, the first extension number, the Switch Manufacturer, Switch Model, Integrations Type, and then click **Next** to continue with the initialization process.

Refer to the *Install Guide*, the *Administration Guide*, the online help, and the related Integration Technical Note, integration text file, or telephone system documentation for information about re-configuring these dialog boxes. After you have re-configured all dialog boxes and recreated the application, you can start CallXpress.



The screenshot shows a Windows-style dialog box titled "Database Initialization Parameters". It contains the following fields and controls:

- Mailbox Length:** A numeric input field with a spinner, currently set to 4.
- First Extension:** An empty text input field.
- Switch:** A section containing three dropdown menus:
  - Manufacturer:** "- Please Select -"
  - Model:** "- Please Select -"
  - Integration Type:** "- Please Select -"
- Language:** A section with two checkboxes:
  - American English only
  - VIM


At the bottom of the dialog, there are four buttons: "< Back", "Next >", "Cancel", and "Help". The "Next >" button is highlighted with a black border.

## Recovering a Database

The Recover Database function allows you to restore your system database back to proper operation from a previous online backup created during the Daily Maintenance routine. You perform a database recovery from the Database dialog box of the Main tab in the System Configuration utility. The System Server must be shutdown to recover the database.

In the event of a complete system failure, it may be necessary to re-install the CallXpress software prior to recovery. Follow the normal CallXpress installation steps to re-install the software. Refer to the *Install Guide*, the *Administrator Guide*, and the online help system for more information on installing CallXpress software. Once the software is completely installed, you can initialize the database with a previous online backup <file>.zip.

---

 **IMPORTANT** The Online Backup Location must be configured in order for the WAV files and report data to be available during the restore process. Otherwise, the WAV files and report data must be manually copied to the new server from the source server.


---

---

**NOTE** Unless otherwise stated, the images and steps below are for a System Server but in most cases they apply to both the System Server and the Call Server. When the differences are important, additional images and steps specific to a Call Server are also shown.

---

---

 **WARNING** The following procedure attempts to recover the database and restore the System Server in a like-new condition with a previously stored database. The recovery process uses an existing backup <file>.zip file to perform the recovery. Any changes to the database that occurred between the time of the backup and the recovery are lost in the process. Exercise extreme caution when performing this procedure.

---

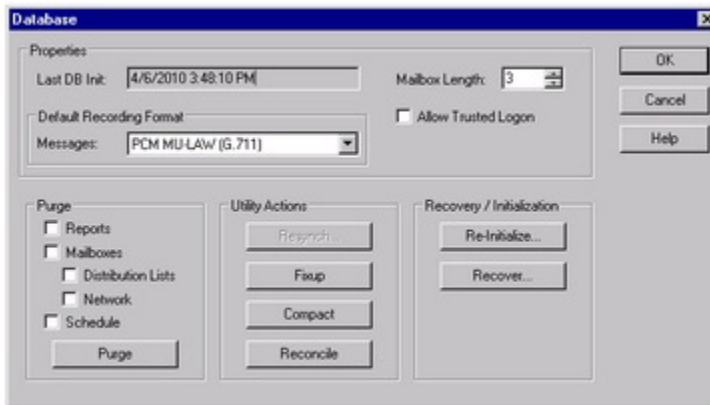
---

**NOTE** CallXpress software must be completely installed before you begin this procedure.

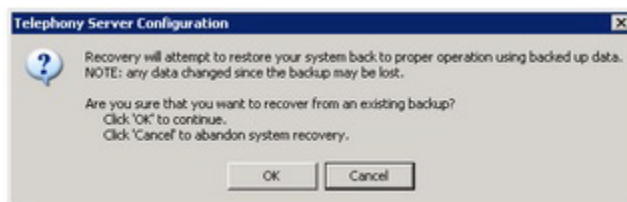
---

## To Recover a Database...

1. **Shut down** the Telephony Server, and then on the Main tab, click **Database**. The Database dialog box displays.



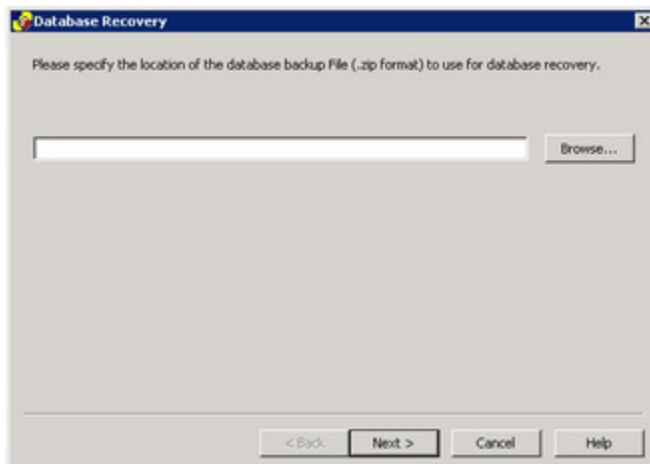
2. Click **Recover**. The Telephony Server Configuration text box displays. Click **OK** to continue.



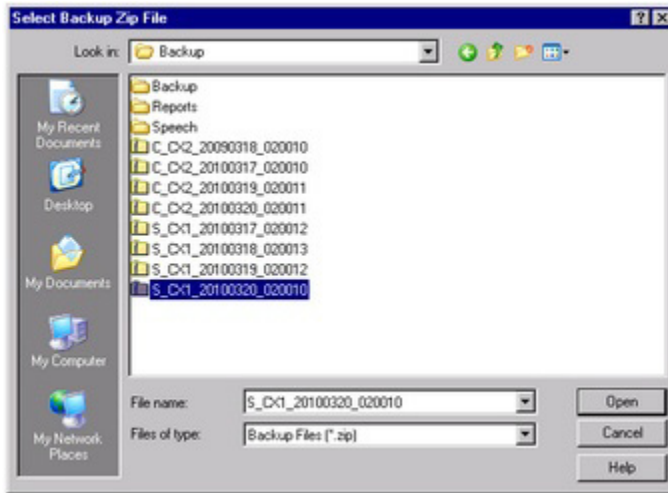
3. To confirm the recover process, click **OK** again. The database recovery wizard starts.



4. The Database Recovery Server Information dialog box displays.

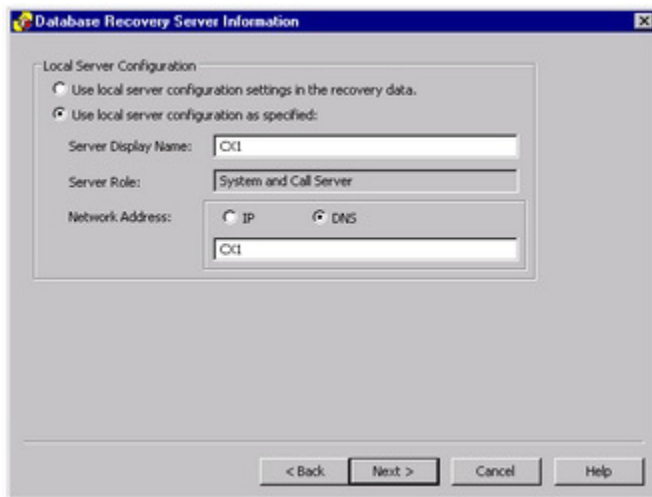


- Click **Browse** to locate the .backup file you want to use from the Online Backup Location. The Select Backup Zip File dialog box displays.



- Select the zip file you want to use for the recovery process, and then click **Open**. The selected path and location are filled in the Database Recovery Server Information dialog box.
- Click **Next**. One of the following Database Recovery Server Information dialog boxes displays, depending on whether the server is a System Server or a Call Server.

System Server Database Recovery Server Information



### Call Server Database Recovery Server Information

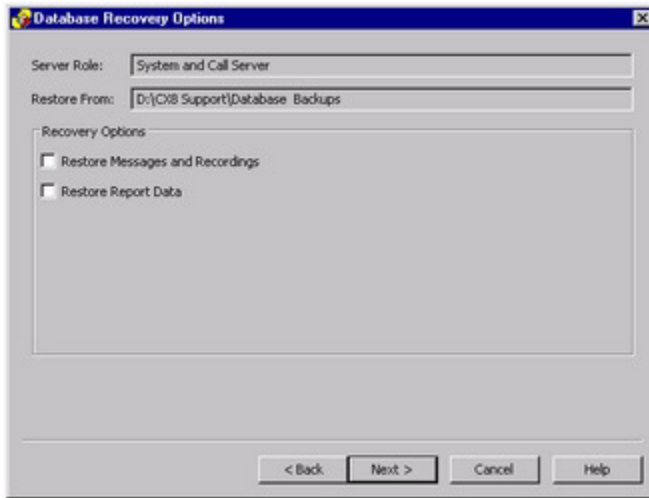
**For the System Server** - From the Database Recovery Server Information dialog box make the following selections:

- Select whether to Use the local server configuration settings in the recovery data (default), or Use local server configuration as specified. If you select, **Use local server configuration as specified**, enter the server display name and the network address. If you select IP, enter a TCP/IP address. If you select DNS, enter a DNS name. Click **Next** to continue. The Database Recovery Options dialog box displays.

**For the Call Server** - From the Database Recovery Server Information dialog box make the following selections:

- Select whether to Use the local server configuration settings in the recovery data (default), or Use local server configuration as specified. If you select, **Use local server configuration as specified**, enter the server display name and the network address. If you select IP, enter a TCP/IP address. If you select DNS, enter a DNS name.
- Select whether to use the System Server settings in the recovery data (default), or to use the system server as specified. If you select, **Connect to the system server specified**, enter the system server address.

8. Click **Next** to continue. The Database Recovery Options dialog box displays.



9. From the Database Recovery Options dialog box, select **Restore Messages and Recordings** if you want to include them in the recovery process.
10. Select **Restore Report Data** if you want to include the report data in the recovery process, and then click **Next**. The Database Recovery Confirmation dialog box displays.

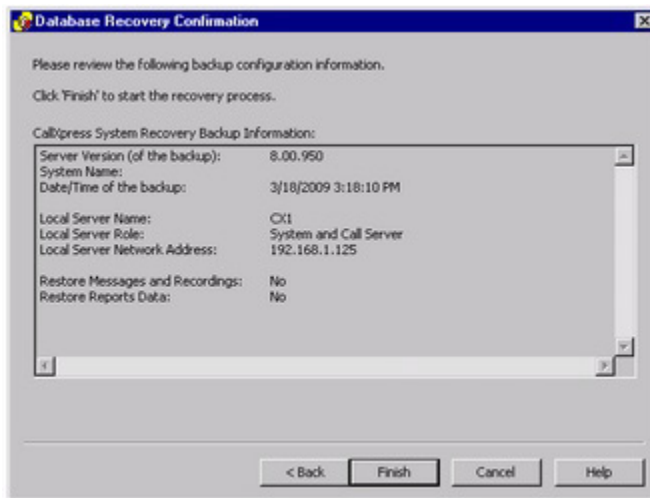
---

**!** **IMPORTANT** The Online Backup Location must be used when restoring messages and recordings in order for the WAV files and report data to be available during the restore process. Otherwise, the WAV files and report data must be manually copied to the server.

---

### Important Considerations:

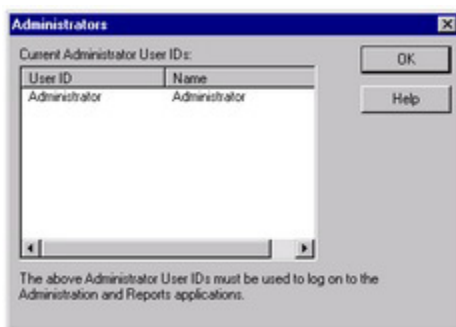
- If you are restoring a Call Server, the recovery options are grayed out
- If you are restoring from the local CX\Backup directory, the recovery options are grayed out
- If you are restoring a System Server from an Online Backup location that is not the local CX\Backup, it is highly recommended that you select both options, particularly if it is a new install of CallXpress software.



11. Click **Finish** to complete the Database Recovery process. The Database Recovery process initializes, recovers the database, rebuilds the database, and then completes.



12. On a System Server, once the Recovery process completes the Administrators dialog box displays and lists the current available administrators. Click **OK** to continue.

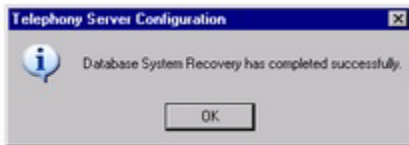


13. On a System Server, the Telephony Server Configuration dialog box displays. Click **OK**. The database is validated, and the System Configuration utility displays. The recovery process is complete.

---

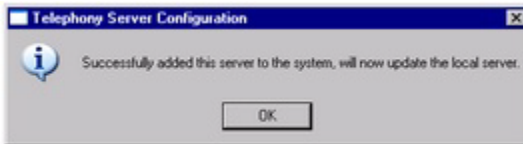
**!** **IMPORTANT** It is essential to re-synchronize each Call Server in the system to this recovered System Server before proper system operation can resume. See the help topic, "Re-Synchronizing a Call Server" for instructions on how to re-synchronize a Call Server.

---



System Server Configuration Completion dialog box

On a Call Server, the server displays a text box indicating it is re-synching with the System Server followed by a dialog box indicating it has been successfully added to the system. Click **OK** to continue. An additional dialog box displays to confirm the completion of a successful Database System Recovery.



Call Server Configuration Completion dialog box



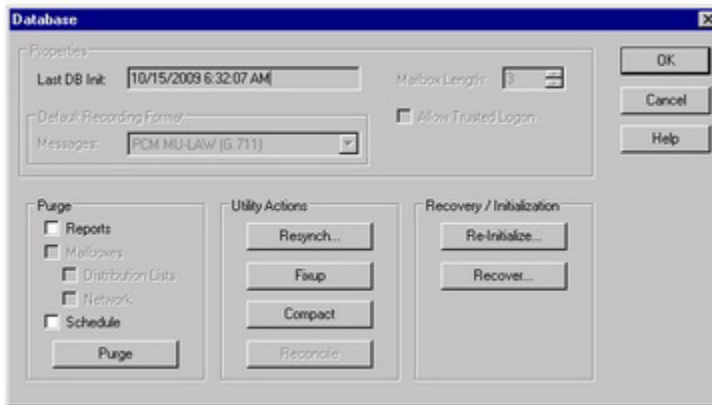
14. Click **OK**.

## Re-synchronizing a Call Server

The re-synchronize function allows you to re-synchronize a Call Server database with the System Server in the event of a network failure, other communication failure, or after a System Server recovery. You perform a re-synchronization from the Database dialog box of the Main tab in the System Configuration utility. The Call Server must be shutdown to re-synchronize the database.

### To re-synchronize the Call Server database...

1. Shut down the Call Server, and then on the Main tab, click **Database**. The Database dialog box displays.



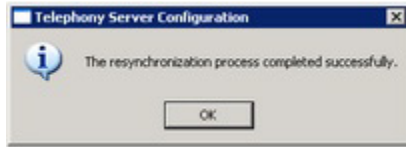
2. Click **Resynch**. The Telephony Server Configuration text box displays.



3. To confirm the re-synch process, click **OK**. The database re-synchronization process starts.



4. When the re-synch process completes, click **OK** to finish.



5. Click **Startup** to start the Call Server.

## Forcing Daily Maintenance from the Command Line

### To force daily maintenance from a command line prompt...

1. Select **Start**, and then click **Run**.
2. At the Run window, type **command**, and then click **OK**.
3. At the command.com window, type **d:**, and then press **Enter**.
4. At the D:\> prompt, type **cd CX\BIN**, and then press **Enter**.
5. At the D:\CX\BIN. prompt, type **AT\_DailyMaintenance**, and then press **Enter**.

For a list of valid command switches for the AT\_DailyMaintenance command, type **AT\_DailyMaintenance -h**, and then press **Enter**. A list of command switches displays.

```

Microsoft Windows [Version 5.2.3790]
(C) Copyright 1985-2003 Microsoft Corp.

d:\cx\bin>AT_dailymaintenance /?
AT_DailyMaintenance - Copies Telephony Server databases to raw files for backup,
and purges over-aged database entries.

Copyright (C) 1982 - 2009 Applied Voice & Speech Technologies, Inc.

Usage:
  AT_DailyMaintenance [switches]

Switches:
  -help           This screen.
  -Verbose       Displays info about whats going on.
  -Backuponly    Skip the database clean pass.
  -Purgeonly     Skip the backup pass.
  -CopySubonly   Copy SUB.DB to CSU files for reports
  -LogCopyOnly  Update PEG.CSV, MSGLOG.CSV, and SPU.CSV
  -Specific:XXXXXX.XXXXXX,... Update specific CSUs, where XXXXXX is the
                    first 6 letters of the CSU's name.
  -InitTime     Sets the "baseline init time" to the current time.
  -RefreshSubscriberContactsOnly Invokes the MIA refresh contact refresh.

d:\cx\bin>

```

<b>Switches</b>	<b>Description</b>
<b>-H</b> (Help)	This help screen
<b>-V</b> (Verbose)	Displays information about what Daily Maintenance is doing as it takes place
<b>-B</b> (Backup Only)	Creates a backup only and skips the database clean-up
<b>-P</b> (Purge Only)	Performs the database clean-up only and skips the backup
<b>-C</b> (Copy Sub.db Only)	Updates all mailbox data in the system (not just Subscriber mailboxes as the name implies)
<b>-L</b> (Log Copy Only)	Updates the PEG, MSGLOG, and SPU .CSV files
<b>-S</b> (Specific: XXXXXX)	Updates specific .CSV files (where XXXXXX is the first six letters of the .CSV filename)

<b>-I</b> (Init Time)	Sets the baseline Init time to the current time
<b>-R</b> (Refresh Subscriber Contacts Only)	Invokes the MTA refresh contacts procedure. Refreshes the subscriber contacts for all Subscriber mailboxes

---

**NOTE** Updating the three log files (-L switch) may have an adverse effect on system performance and should be avoided during high traffic periods, or at least tested in advance to determine if the procedure causes performance issues.

---